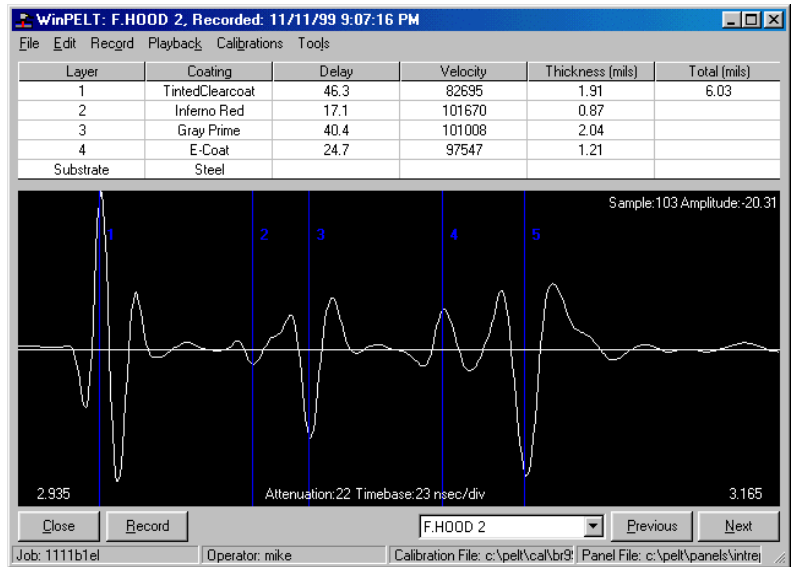


Introducing...WinPELT 1.5[®]

Bring the convenience of Windows[®] to the PELT[®] Gauge

Features

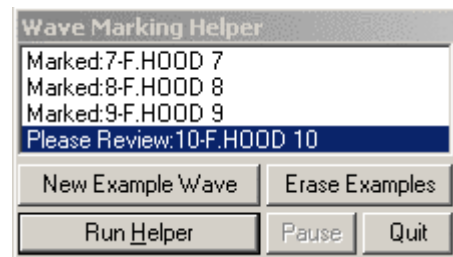
- Works with legacy PELT hardware
- Enhanced features for fast keyboard and mouse marker placement
- Support for any screen size
- Windows[®] 2000 compatible
- Built in support to install calibration files
- User interface is similar to legacy MS-DOS software which minimizes re-training needs.
- Wave Marking Helper:

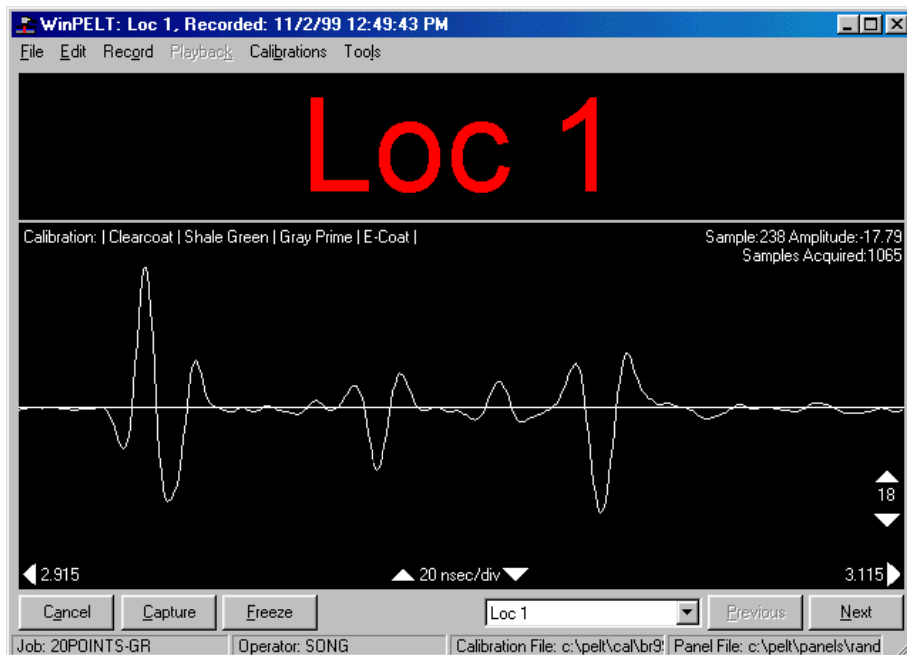


Playback Screen

- Creates a small pop-up window that controls automatic waveform marking
- The user places the markers for one wave (an example) and the software steps through the additional waves automatically placing the markers
- Automatic wave marking pauses and waits for operator input when the example is not relevant for the waveform
- Improves user efficiency by reducing the time required to manually position markers

Wave Marking Helper Control Window

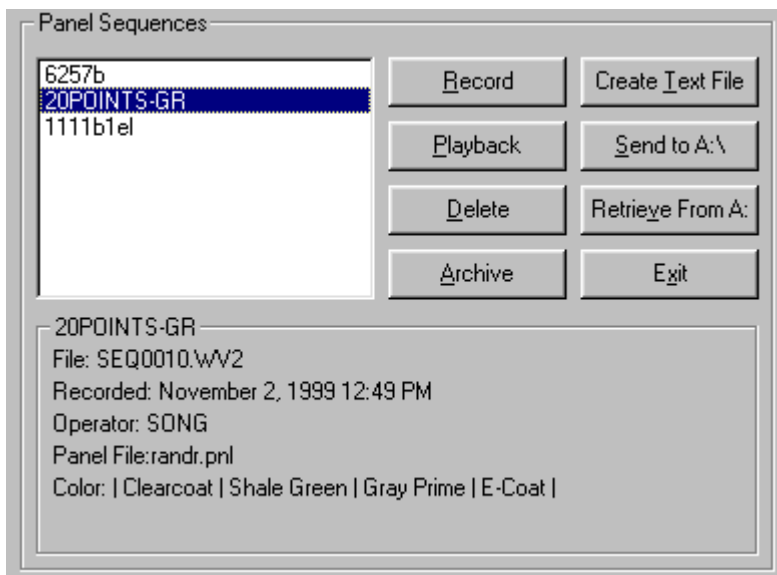




Record Screen

System Requirements

- PC with a Pentium 166 MHz or higher processor
- Microsoft® Windows 95® or later operating system
- Available ISA Card slot for communications with PELT Hardware
- 32MB of RAM for Windows 95 or later (64 MB recommended)
- 10 MB minimum hard-disk drive space required
- Microsoft compatible mouse or pointing device



Main Control Window

Package Includes

Software and electronic user manual. On-site support and training are available if needed, an additional charge will apply. Credit card orders are accepted.

Trial Software

A free 30-day evaluation version of the software is available upon request. Please contact your Technical Service Representative for more information.

Upgrades

Existing users of version 1.0 can upgrade for a minimal cost.

For more information call or contact us at:



3800 Monroe Ave
Pittsford, New York, 14534 USA
Tel: +1 585 264 0480 Fax: +1 585 264 9642
www.jsrultrasonics.com